

South Indian River Water Control District

January 16, 2025

Board of Supervisors Meeting



Attention:

- Tonight's meeting is a **Board Meeting**.
- The items for discussion are numbered on the **Agenda**.
- Please use **your name** for the record when joining the meeting.
- **On Zoom, everyone will be muted, and video turned off during the meeting.**
- Landowners were requested to provide comments in writing and requests to speak prior to the meeting. The comments will be heard during the **Landowners' Items**, and you will be allowed **3 minutes** on each item of the agenda you wish to speak about.
- If you did not notify the District prior to the meeting of your desire to speak, you will be muted for the entire meeting.
- **Thank you for your patience!**

1. Pledge of Allegiance



2. Consent Agenda

A. Approval of the Minutes of the Previous Meeting

B. Approval of Warrant List

Board Discussion

Motion from the Board

3. Landowners' Items



Landowners' Comments

4. Public Information Report



Presented by
Donna J. DeNinno
Public Information Officer

4. Public Information Report (2)



A. Policies and Procedures Manual

B. Landowners' Family Day

5. Treasurer's Report



Presented by
Charles Haas
District Treasurer

6. Executive Director's Report



Presented by
William 'Chad' Kennedy
Executive Director

6. Executive Director's Report (2)

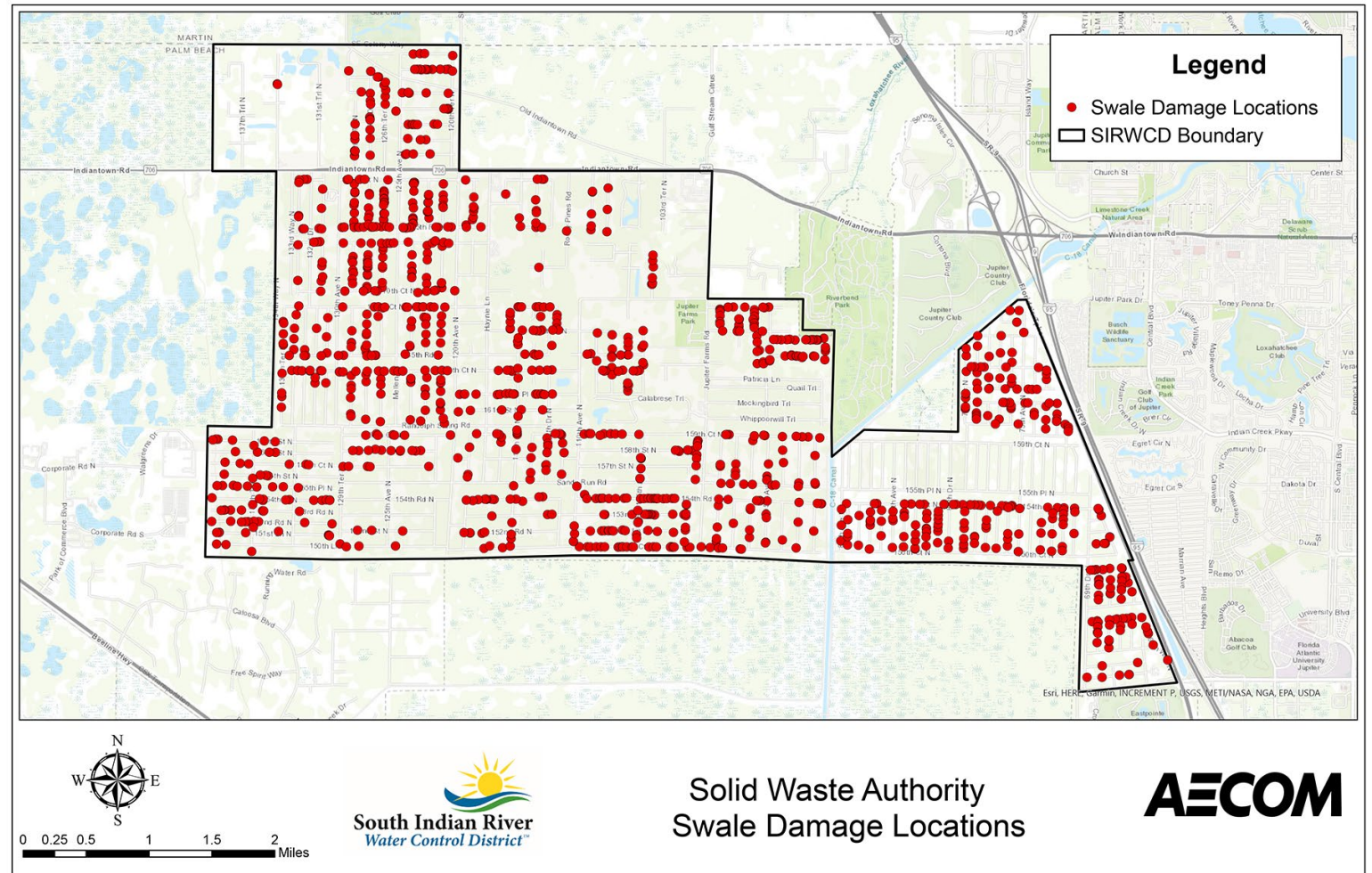


- A. Paving Petition Update**
- B. Natural Resources Conservation Service Storm Grant Update**
- C. District Map of Swale/Easement Damage from Solid Waste Authority**

6. Executive Director's Report (3)

C. District Map of Swale Damage from Solid Waste Authority

Palm Beach Country Estates – 263
Jupiter Farms – 933
Total – 1196



7. Supervisor of Operations Report

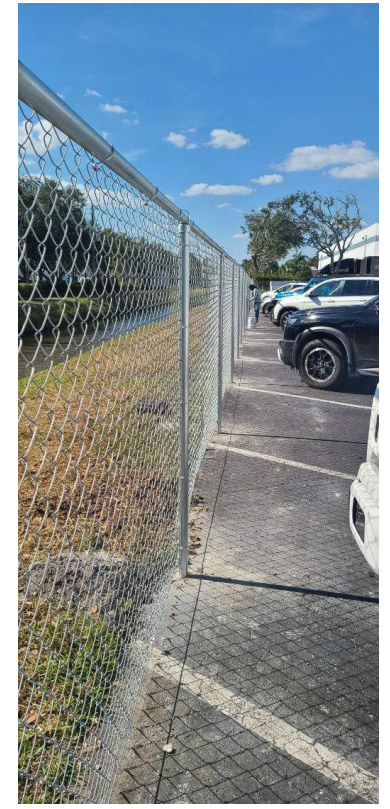


Presented by
Dustin Fazio
Supervisor of Operations

A. Request for Board Approval of Surplus of International 4300 Dump Truck



A. Jupiter Park of Commerce Fence Installation



8. Engineer's Report



Presented by
Karen D. Brandon, PE
District Engineer

8. Engineer's Report (2)

A. Palm Beach Country Estates Paving Petition Ballots

- Ballots for seven (7) roadway petitions were mailed out on December 13th
- The ballots were counted on January 13th
- The results are as follows:

8. Engineer's Report (3)

A. Palm Beach Country Estates Paving Petition Ballots Percentage of YES Votes:

- 69th Trail North between 150th Place North and 154th Court North – 31%
- 77th Trail North between 155th Place North and 159th Court North – 28%
- 85th Way North between 155th Place North and 159th Court North – 11%
- 86th Way North between 155th Place North and 159th Court North – 39%
- 87th Trail North between 155th Place North and 159th Court North – 28%
- 88th Trail N between 155th Place North and 159th Court North – 47%
- 154th Court North between 69th Drive North and 69th Trail North – 0%

Note: 90% YES votes required to pass

8. Engineer's Report (4)

B. Palm Beach Country Estates Modeling Update

- Staff is awaiting receipt of the stage data from the Town of Jupiter in order to complete the calibration
- The Report is undergoing Quality Assurance/Quality Control review with the calibration section pending

8. Engineer's Report (5)

C. Busch Wildlife Update

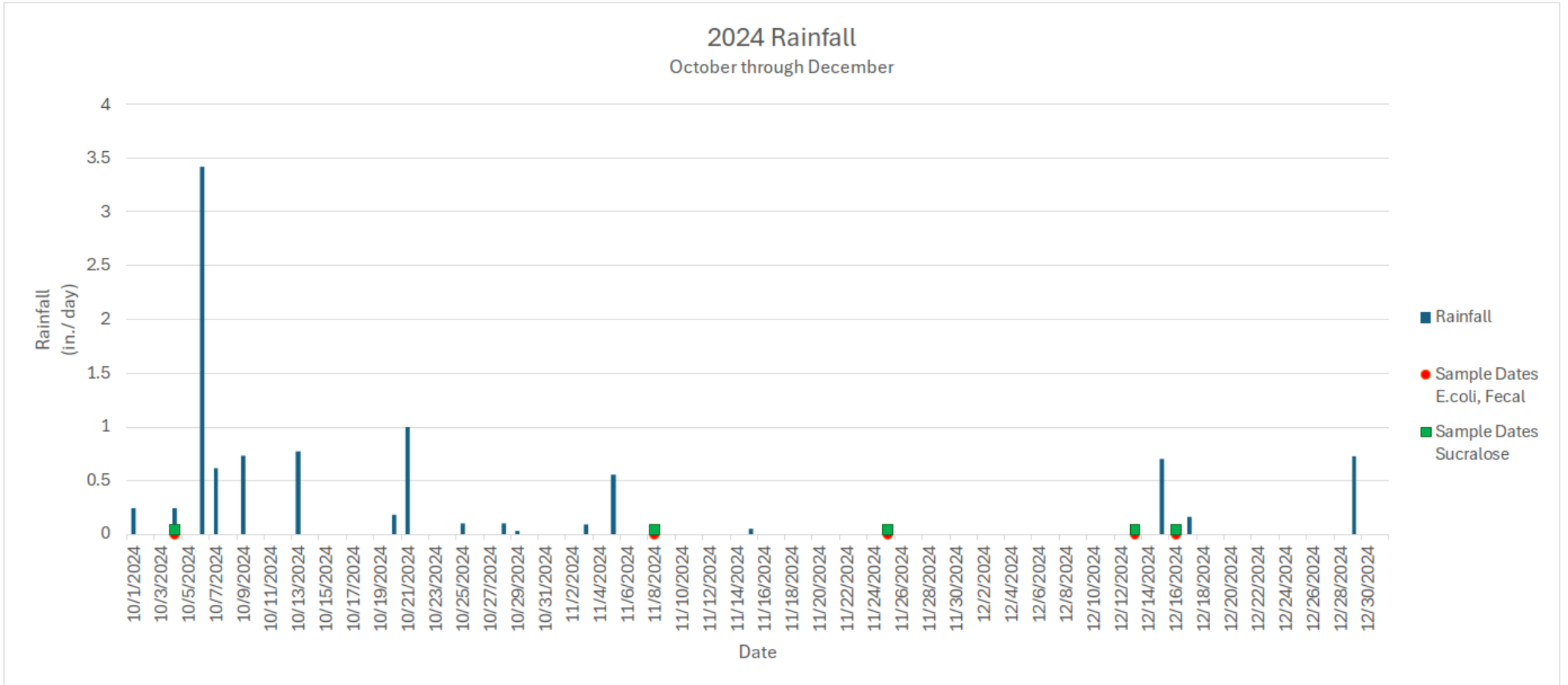
- Busch Wildlife Sanctuary is in agreement with the latest plan and has authorized submittal of an Environmental Resource Permit modification to South Florida Water Management District
- Busch Wildlife Sanctuary will submit a permit modification to South Indian River Water Control District for concurrent review

8. Engineer's Report (6)



D. Water Quality Update

8. Engineer's Report (7)



8. Engineer's Report (8)

D. Water Quality Update

Sample values

November 8-25

MPN = Most Probable
Number

CFU = Colony Forming Units

| Location | E.Coli (MPN/100mL) | Fecal Coliform (CFU/100mL) | Sucralose (µg/L) |
|-----------------|-----------------------|-------------------------------|---------------------|
| SIRWCD-1 | 1U | 1U | - |
| SW-1-2 | 31 | 105 | - |
| LRECD – Sta. 95 | N/A | N/A | - |
| SW-3 | 20 | 55 | - |
| SW-4 | 85 | 100 | - |
| SW-5 | 670 | 470 | 0.74 |
| SW-9 | 20 | 10U | - |
| SW-10 | 379 | 400 | - |
| SW-14 | 86 | 75 | - |
| SW-18 | 10 | 4 | - |
| SW-92 | 10U | 3 | - |
| SW-A | 10U | 4 | - |
| SW-C | 10 | 35 | - |
| SW-D | 52 | 68 | 0.62 |
| SW-E | 74 | 60 | - |

8. Engineer's Report (9)

D. Water Quality Update

Sample values

December 13-16

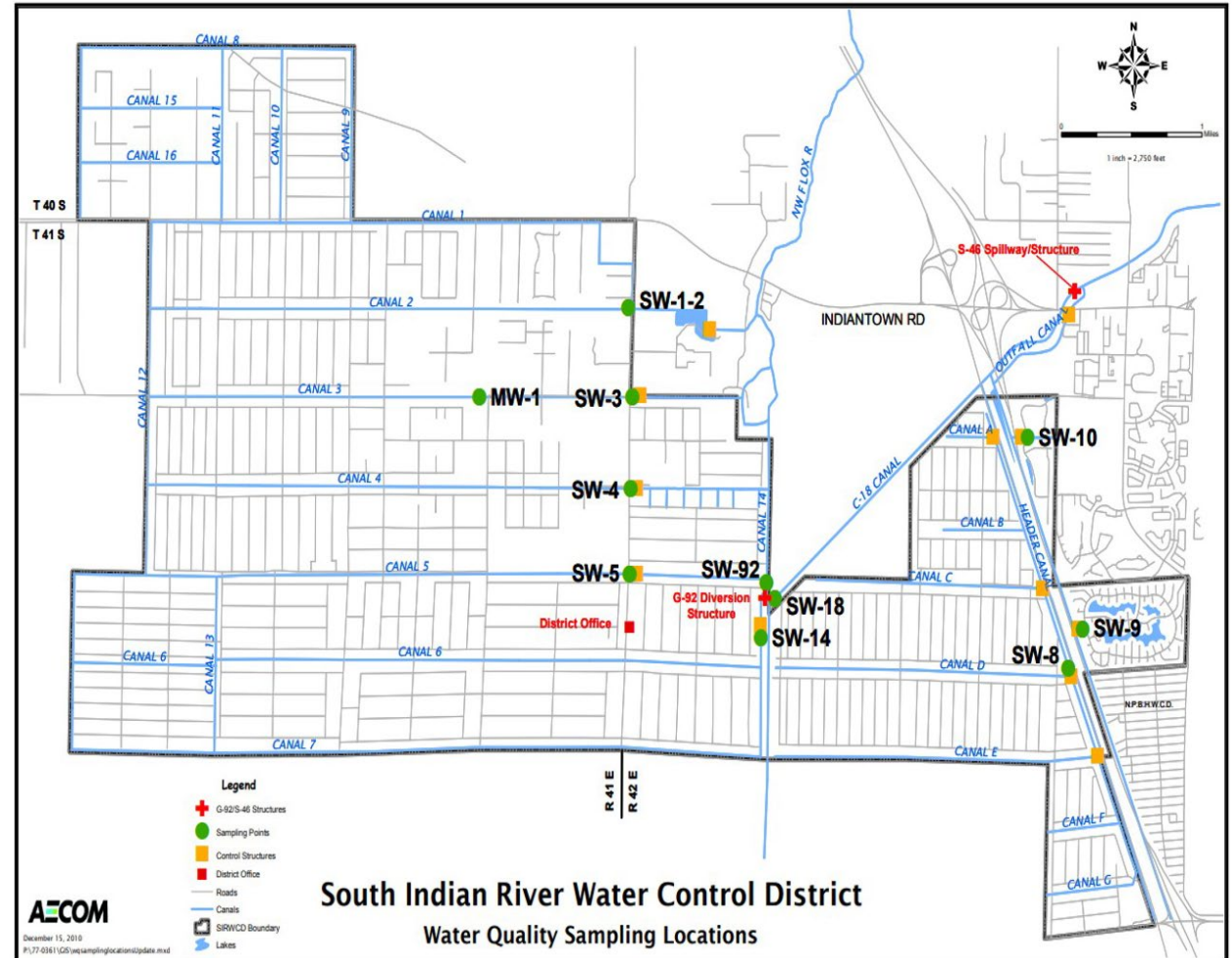
MPN = Most Probable
Number

CFU = Colony Forming Units

| Location | E.Coli (MPN/100mL) | Fecal Coliform (CFU/100mL) | Sucralose (µg/L) |
|-----------------|-----------------------|-------------------------------|---------------------|
| SIRWCD-1 | 1U | 1U | - |
| SW-1-2 | 52 | 40 | - |
| LRECD – Sta. 95 | N/A | N/A | - |
| SW-3 | 98 | 42 | - |
| SW-4 | 74 | 55 | - |
| SW-5 | 670 | 400 | 0.68 |
| SW-9 | 30 | 30 | - |
| SW-10 | 85 | 120 | - |
| SW-14 | 10U | 10 | - |
| SW-18 | 10 | 2 | - |
| SW-92 | 20 | 4 | - |
| SW-A | 10 | 40 | - |
| SW-C | 10U | 4U | - |
| SW-D | 373 | 260 | 0.36 |
| SW-E | 41 | 65 | - |

8. Engineer's Report (10)

D. Water Quality Update



9. Attorney's Report



Presented by
William G. Capko and Seth Behn
District Attorneys



10. Old Business



11. New Business

- A. Board Approval for Recording Secretary Payroll**
- B. Resolution for Employee Retirement Benefits**

12. Adjourn



Aerial of the District

